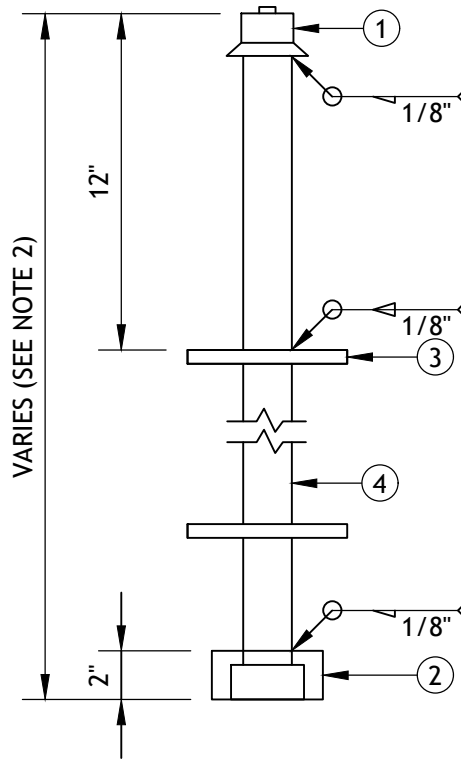
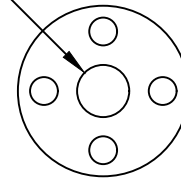


REV: 3/30/2022 J.WOLF  
M:\ENGINEERING - SECURED\STANDARDS\DWG\2022 UPDATE\WATER\W-118 VALVE STEM EXTENSION\_2022.DWG



Opening to be 1/4" larger than the outside dimension of the bar stock



SPACER PLATE DETAIL

**ITEM MATERIALS:**

- ① AWWA 2" OPERATING NUT
- ② AWWA SOCKET FOR 2" SQUARE OPERATING NUT
- ③ 6 1/2" DIA. x 3/16" SPACE PLATE
- ④ 1 1/4" SOLID, ROUND, OR SQUARE STEEL BAR STOCK (PINNED COUPLERS ARE NOT ALLOWED, HOLLOW TUBE OR PIPE ARE NOT ALLOWED)

**NOTES:**

1. Provide valve stem extension when depth to operating nut exceeds 84" (Fabricate extension to field measurement, see note 2).
2. Terminate extension 24" to 36" from finished grade.
3. Provide additional spacer plate(s) when distance to bottom socket exceeds 60" beyond lowest plate.

**VALVE STEM EXTENSION**



EAST VALLEY WATER DISTRICT, ENGINEERING DEPARTMENT

APPROVED BY:

*Jeff Noelte*  
JEFF NOELTE, P.E. 67924  
DIRECTOR OF ENGINEERING & OPERATIONS

APRIL 2022  
REVISION

EVWD  
STD. DWG.  
W-118

SHEET 1 OF 1