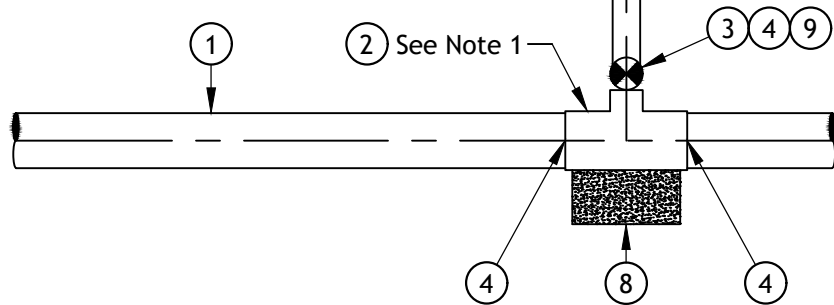


**MANIFOLD DESIGN GUIDELINES (SEE NOTE 3)**

Manifold Dia.	Maximum No. of 2" (or Smaller) Water Services
4"	4
6"	8

**ITEM MATERIALS:**

- ① DUCTILE IRON PIPE (D.I.P.)
- ② TEE, M.J. x M.J. x FLG.
- ③ GATE VALVE, FLG. x M.J.
- ④ MEGALUG RESTRAINT
- ⑤ TEE, M.J.
- ⑥ DUCTILE IRON PIPE (D.I.P.), FLG. x P.E.
- ⑦ BLIND FLANGE
- ⑧ THRUST BLOCK, PER EVWD STD. DWG. W-108
- ⑨ ADJUSTABLE VALVE CAN, EXTENSION AND LID, PER EVWD STD. DWG. W-XXX
- ⑩ 90° BEND, M..J. x M.J.



**NOTES:**

1. If connection being made is to an existing water main, refer to EVWD Std. Dwg. W-104.
2. Use EVWD Std. Dwg. W-101A for all installations of new water meters.
3. Sizing should be verified by the Design Engineer based upon the specific available pressures in the water main and the on-site water service pressures required.

**SERVICE MANIFOLD**

REV: 3/30/2022 J.WOLF M: ENGINEERING - SECURED\STANDARDS\DWG\2022 UPDATE\WATER\W-117 SERVICE MANIFOLD DETAIL\_2022.DWG



EAST VALLEY WATER DISTRICT, ENGINEERING DEPARTMENT

APPROVED BY:

*Jeff Noelte*  
 JEFF NOELTE, P.E. 67924  
 DIRECTOR OF ENGINEERING & OPERATIONS

APRIL 2022  
 REVISION

EVWD  
 STD. DWG.  
 W-117

SHEET 1 OF 1