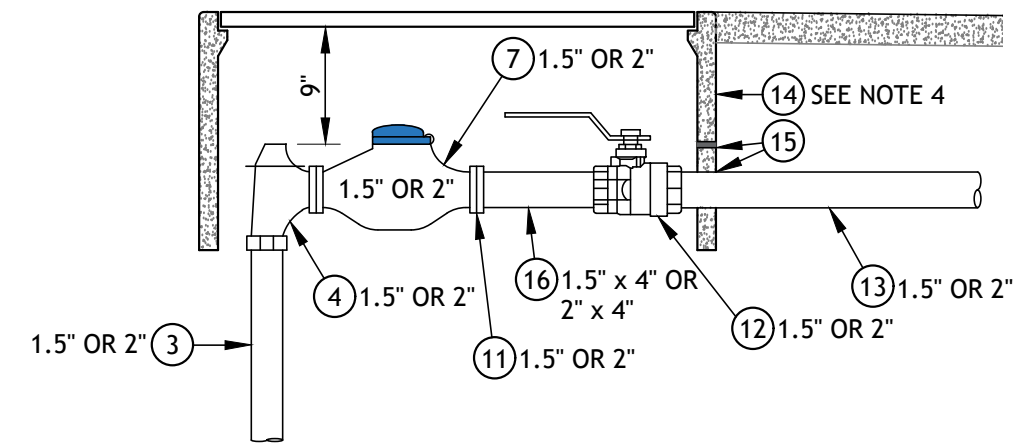
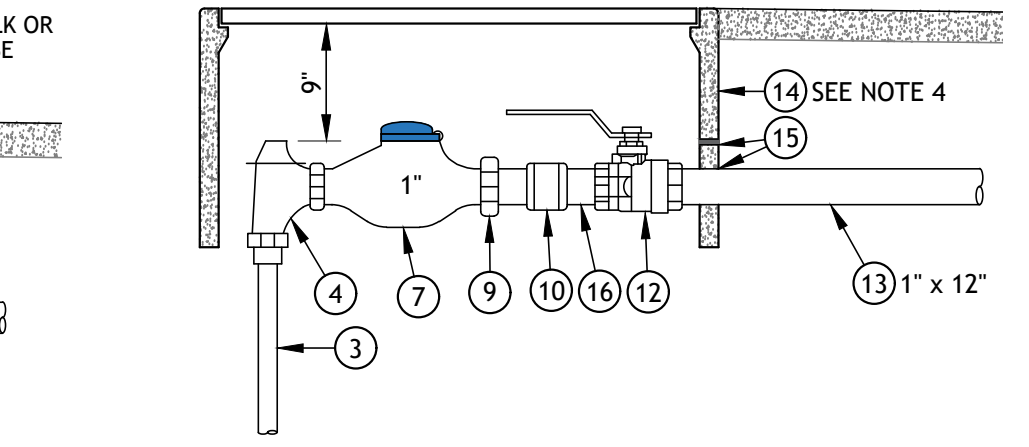
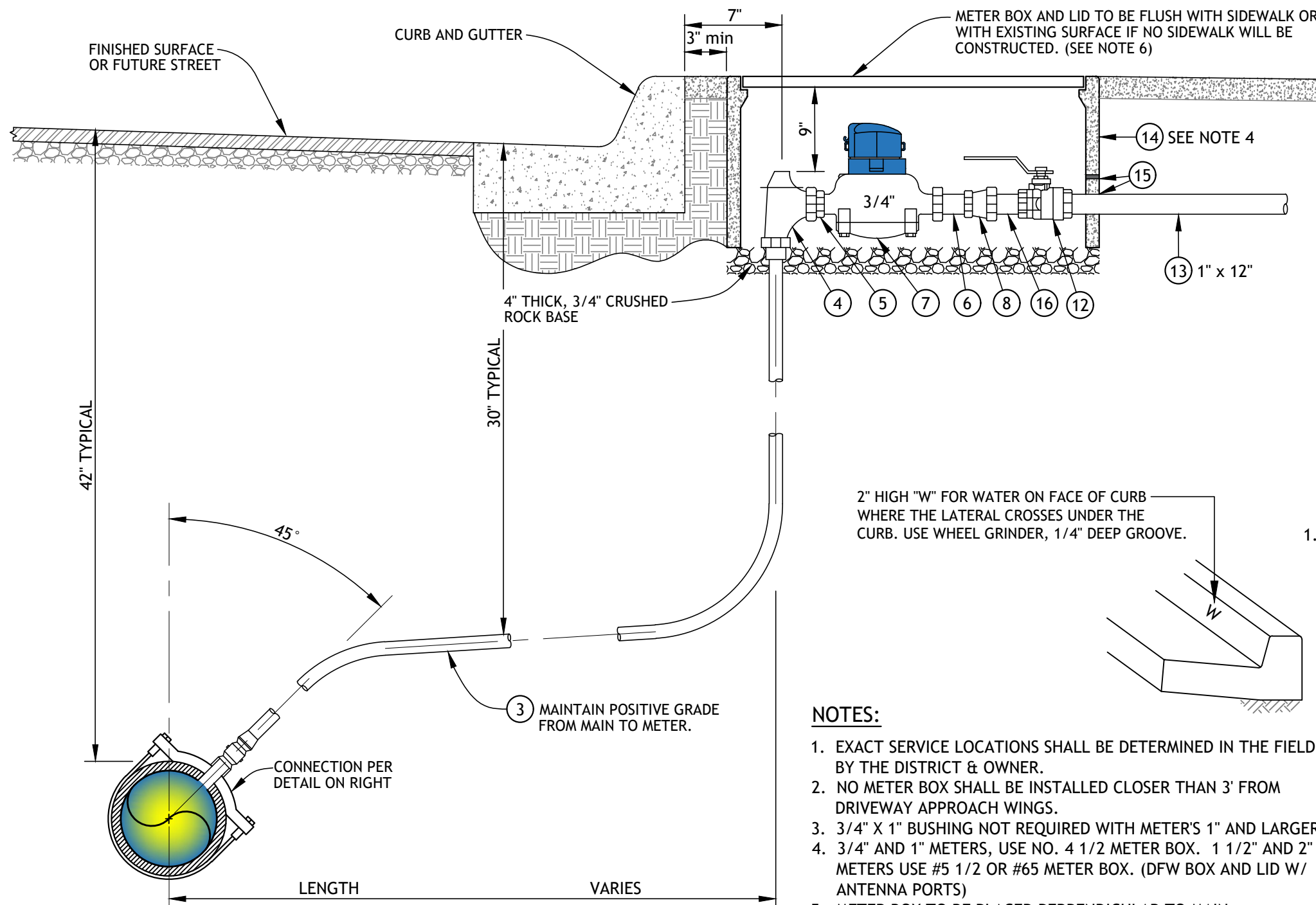
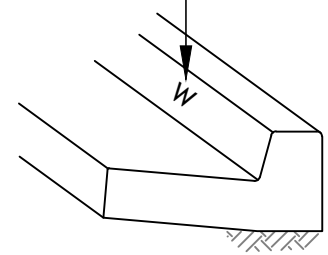


REV: 3/29/2022
 W-101A WATER SERVICE INSTALLATION (D.I.P.)_2022.DWG
 SECURED\STANDARDS\DWG\2022 UPDATE\WATER\W-101A WATER SERVICE INSTALLATION (D.I.P.)_2022.DWG

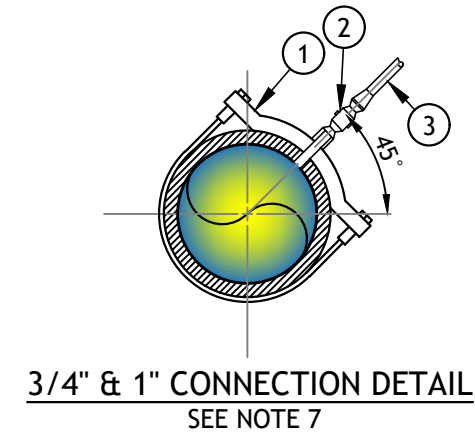


2" HIGH "W" FOR WATER ON FACE OF CURB WHERE THE LATERAL CROSSES UNDER THE CURB. USE WHEEL GRINDER, 1/4" DEEP GROOVE.

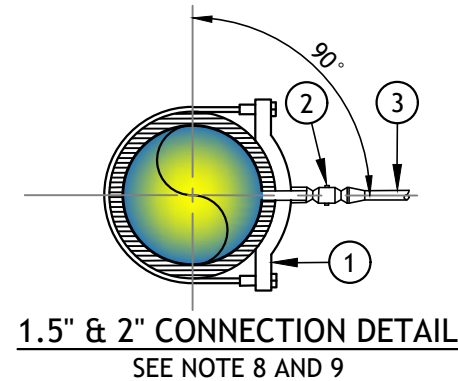


NOTES:

1. EXACT SERVICE LOCATIONS SHALL BE DETERMINED IN THE FIELD BY THE DISTRICT & OWNER.
2. NO METER BOX SHALL BE INSTALLED CLOSER THAN 3' FROM DRIVEWAY APPROACH WINGS.
3. 3/4" X 1" BUSHING NOT REQUIRED WITH METER'S 1" AND LARGER.
4. 3/4" AND 1" METERS, USE NO. 4 1/2 METER BOX. 1 1/2" AND 2" METERS USE #5 1/2 OR #65 METER BOX. (DFW BOX AND LID W/ ANTENNA PORTS)
5. METER BOX TO BE PLACED PERPENDICULAR TO MAIN.
6. IF METER BOX IS PLACED IN HIGH TRAFFIC AREA, THE METER LID SHOULD BE TRAFFIC RATED.
7. 1" SERVICE SADDLE, CORP. STOP AND SERVICE LINE WILL BE USED FOR ALL 3/4" AND 1" METER INSTALLATIONS.
8. 1.5" SERVICE SADDLE, CORP. STOP AND SERVICE LINE WILL BE USED FOR ALL 1.5" METER INSTALLATIONS.
9. 2" SERVICE SADDLE, CORP. STOP AND SERVICE LINE WILL BE USED FOR ALL 2" METER INSTALLATIONS.



3/4" & 1" CONNECTION DETAIL
SEE NOTE 7

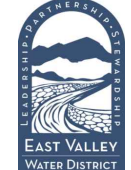



1.5" & 2" CONNECTION DETAIL
SEE NOTE 8 AND 9

ITEM MATERIALS:

- | | |
|--|---|
| ① DOUBLE STRAP DUCTILE IRON SERVICE SADDLE (ROMAC DUCTILE PLUS OR EQUAL) (DIA. of WATER MAIN x 1" MINIMUM) | ⑧ 3/4" x 1" BELL, BRASS |
| ② CORPORATION STOP (I.P.T.) TO COPPER 1" MINIMUM | ⑨ 1" x 2-5/8" METER COUPLING |
| ③ SERVICE TUBING TYPE "K" SOFT COPPER (SEE NOTES 7 - 9 FOR INSTALLATION SIZES) | ⑩ 1" COUPLING, BRASS |
| ④ ANGLE METER STOP (CURB STOP), 1" MINIMUM | ⑪ METER FLANGE, 1.5" OR 2" |
| ⑤ 1" x 1- 1/4" METER BUSHING | ⑫ BALL VALVE, 1" MINIMUM, BRASS (CUSTOMER PRIVATE SHUTOFF) |
| ⑥ 3/4" x 2-1/2" METER COUPLING | ⑬ NIPPLE, BRASS (TAILPIPE) |
| ⑦ WATER METER (DISTRICT WILL SET METER ONCE ALL FEES HAVE BEEN PAID) | ⑭ METER BOX & LID, POLY |
| | ⑮ LEAVE MINIMUM 1" CLEARANCE BETWEEN TOP OF PIPE AND CUTOUT |
| | ⑯ 1" x 4" NIPPLE, BRASS |

WATER SERVICE INSTALLATION 3/4" THRU 2" (D.I.P.)

	EAST VALLEY WATER DISTRICT, ENGINEERING DEPARTMENT	EVWD STD. DWG. W-101A SHEET 1 OF 1
	APPROVED BY:  JEFF NOELTE, P.E. 67924 DIRECTOR OF ENGINEERING & OPERATIONS	