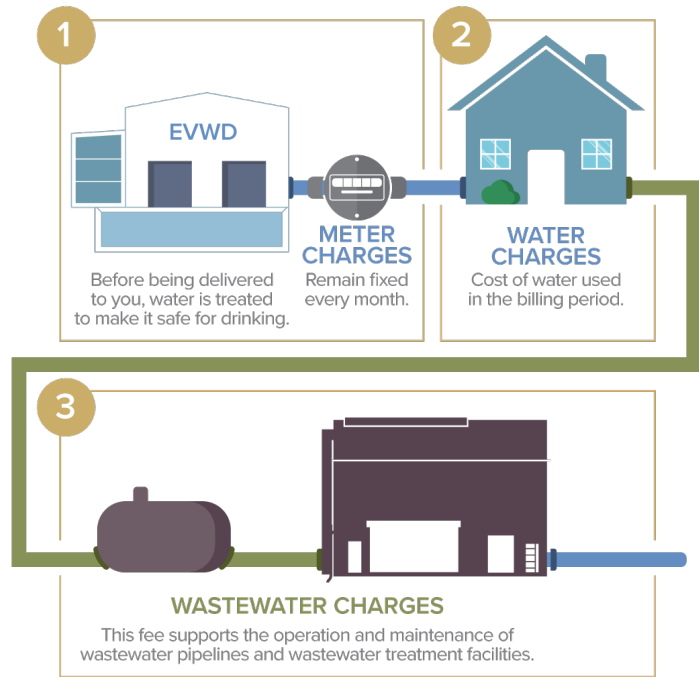


## WHAT IS INCLUDED IN THESE RATES

The average residential monthly bill includes a bundle of three services: 1) Meter Charges, 2) Water Charges, and 3) Wastewater Charges. Rates directly support operations, maintenance, system enhancements, and cover the costs associated with providing reliable water and wastewater services.



*As a government agency, the District is required by law to only charge its customers the costs associated with providing services.*

## NEW RATES IN ACTION



East Valley Water District is committed to a long-term approach focusing on a resilient local water supply.



Updating rates would ensure that the District can meet regulatory requirements and operate critical infrastructure of the water and wastewater system, while maintaining financial stability.



These updated rates will allow the District to address the continued needs of our community.

*\$30 million over the next 3 years will be invested in replacing aging water infrastructure in our community.*



## WHY YOU RECEIVED THIS NOTICE

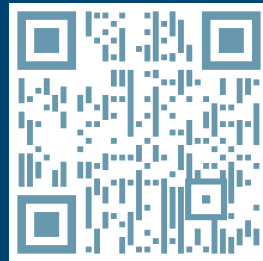
You have received this document because the District has completed an independent Cost of Service Analysis Rate Study Report and is considering making changes to the current water and wastewater rates. This notice also informs you of adjustments to indoor water allocations based on the passage of Senate Bill 1157 (SB 1157).

### Find Out More Online

East Valley Water District has created a dedicated online resource page to provide you with additional information. Visit the website to access:

- Digital copy of this public notice
- Review the independent rate study
- Submit a question online
- Learn how you can participate in the process

For more information about the cost of service analysis, visit [eastvalley.org/RateUpdate](http://eastvalley.org/RateUpdate) or scan the QR code.



## HOW YOU CAN PARTICIPATE

If you have any questions or comments about the proposed rates you may participate in the following ways:



### Public Hearing Participation

Members of the public are welcome to attend the in-person public hearing on **Wednesday, May 15, 2024 at 5:30pm** at 31111 Greenspot Road, Highland, California 92346. Property owners may submit written protests which must be submitted by the close of the hearing. You will have an opportunity to speak, but verbal comments alone do not qualify as a formal protest.



### Write

If you are a property owner who receives water and/or wastewater services from the District, you have the right to file a formal written protest. These written comments may be mailed to East Valley Water District, Attention: District Clerk, 31111 Greenspot Road, Highland, California 92346 prior to the public hearing.

Protests must specify the rate or charge being protested and must include: your name, parcel number and/or service address, and your signature. Email protests will not be included in the formal tally. Written protests may be left at the District's payment drop off located at the District's headquarters.



### Objections

At the time of the Public Hearing, the Board of Directors will tally and consider all written protests and objections. If a majority of the property owners directly liable for paying water bills submit written protests in opposition to the proposed rate increases, the increases will not be imposed. If a majority protest is not received, East Valley Water District's Board of Directors may vote to modify the rates in consideration.



31111 Greenspot Road  
Highland, California 92346



PUBLIC HEARING NOTICE

## PROPOSED CHANGES TO WATER AND WASTEWATER RATES

The Board of Directors of East Valley Water District (District) will conduct an in-person public hearing to consider implementing a schedule of increases to the District's water and wastewater rates over the next three years. All members of the public are invited to participate in the public hearing.

**Wednesday, May 15, 2024 at 5:30pm**  
**District Headquarters Board Room**  
**31111 Greenspot Road, Highland, California 92346**

The public hearing will be conducted pursuant to Article XIII D of the California Constitution. This notice is being sent to all property owners, who may submit a written protest to the proposed rate changes. East Valley Water District is committed to keeping its customers well informed throughout the process. More information about the rates included in this document and how to participate is available online at [eastvalley.org/RateUpdate](http://eastvalley.org/RateUpdate).

[f](#) [i](#) [x](#) [v](#) @eastvalleywater

*Este documento incluye información sobre cambios propuestos por East Valley Water District a las tarifas de agua y aguas residuales. Para más información sobre este aviso llame al (909) 889-9501, visite [eastvalley.org](http://eastvalley.org) o visite las oficinas del Distrito.*

**Important Information Enclosed About Your Water and Wastewater Rates**  
All members of the public are invited to participate in a public hearing regarding proposed changes to your water and wastewater rates, to be held on **Wednesday, May 15, 2024 at 5:30pm** at **31111 Greenspot Road, Highland, California 92346**.



## PROPOSED WATER RATE CHARGES

Water rates fund the costs of providing safe and reliable water services, including system maintenance, repairs, enhancements, and the treatment of water. Proposed rates would take effect on January 1, 2025.

### MONTHLY METER CHARGES

METER SIZE	CURRENT RATE	JAN. 1, 2025	JAN. 1, 2026	JAN. 1, 2027
5/8"	\$ 25.49	\$ 27.52	\$ 29.18	\$ 30.94
3/4"	32.74	34.62	36.70	38.91
1"	47.24	48.83	51.76	54.87
1 1/2"	83.50	84.35	89.42	94.79
2"	127.00	126.97	134.59	142.67
3"	243.01	368.48	390.59	414.03
4"	373.52	901.23	955.31	1,012.63
6"	736.05	1,433.89	1,520.02	1,611.23
8"	2,041.16	2,854.65	3,025.93	3,207.49
10"	2,041.16	4,630.48	4,908.31	5,202.81
12"	2,041.16	5,695.98	6,037.74	6,400.01

HCF — The unit of measure used for water billing equal to 748 gallons.

Most residential customers fall into one of these meter sizes.

### RESIDENTIAL VARIABLE CHARGES

TIERS	CURRENT RATE	JAN. 1, 2025	JAN. 1, 2026	JAN. 1, 2027
Tier 1	\$ 2.11	\$ 2.19	\$ 2.33	\$ 2.47
Tier 2	2.70	2.84	3.02	3.21
Tier 3	4.18	4.10	4.35	4.62

### COMMERCIAL FIXED RATE

TIERS	JAN. 1, 2025	JAN. 1, 2026	JAN. 1, 2027
Tier 1	\$ 2.39	\$ 2.54	\$ 2.70

As part of the District's cost of service analysis, it was determined the variable charge for non-residential/commercial customers should be eliminated. The proposed meter rates and fixed tier rate above, and fire service charges below will no longer include a variable rate for this group of customers.

### FIRE SERVICE CHARGES

METER SIZE	CURRENT RATE	RATE	METER SIZE	CURRENT RATES	RATE
5/8"	\$ 8.78	\$ 13.75	4"	\$ 35.14	\$ 16.11
3/4"	8.78	13.84	6"	52.70	17.51
1"	8.78	14.01	8"	70.27	18.91
1.5"	13.18	14.36	10"	87.84	20.31
2"	17.57	14.71	12"	87.84	21.71
3"	26.35	15.41			

## Wastewater Collection Charges

Wastewater collection charges support the maintenance of the underground pipeline system from the customer's property to the wastewater treatment facility. This includes operations and maintenance activities, pipeline replacements, and regulatory compliance activities. Residential customers are charged a fixed rate based on the number of dwelling units on the property. Non-residential properties are charged two components, a fixed and a variable collection rate.

## Wastewater Treatment Charges

Wastewater treatment is the process of removing contaminants from sewer flows to where the remaining water can safely be used for community benefit. Wastewater treatment fees are used for operations and maintenance costs of the treatment facility.

## Fixed and Variable Water Rate Charges

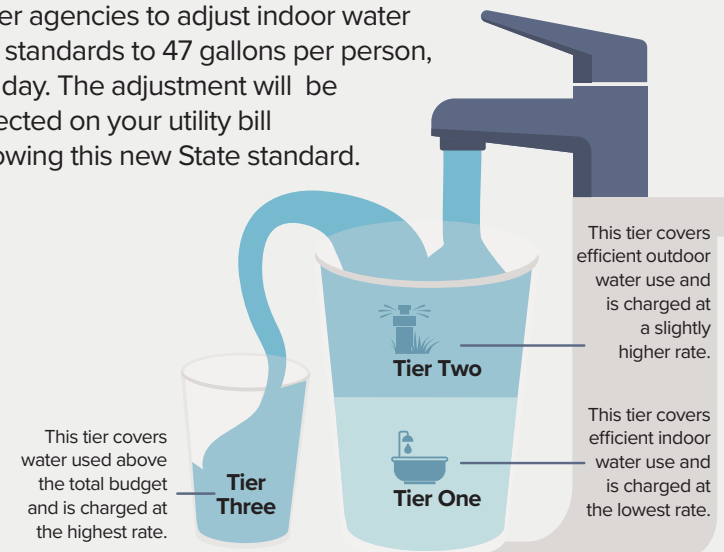
Your water service includes two types of charges: fixed and variable. Monthly fixed water service charges are based on the size of your meter and do not change based on the amount of water delivered. This charge supports the operations and maintenance costs of things like groundwater wells, the surface water treatment plant, and water reservoirs. Infrastructure enhancements and replacements are also directly supported by these fees.

Residential variable charges are based on the amount of water used monthly. How much you pay per unit, equivalent to 748 gallons of water (HCF), depends on your water budget. There are three separate tiers and the cost of each is based on the actual cost of service.

## Water Allocation

East Valley Water District follows State guidelines for allocating indoor water usage standards for each person in a household. Under current law, each person is allocated 55 gallons per day for essential indoor use such as bathing, cooking, and laundry.

Beginning January 1, 2025, Senate Bill 1157 (SB 1157) mandates water agencies to adjust indoor water use standards to 47 gallons per person, per day. The adjustment will be reflected on your utility bill following this new State standard.



## PROPOSED COLLECTION CHARGES

Wastewater collection fees fund operations and maintenance of the wastewater system. These fees apply to customers that are connected to the District's wastewater system. Proposed rates would take effect on July 1, 2024.

### SINGLE-FAMILY FIXED RESIDENTIAL CHARGES

DWELLING SIZE	CURRENT RATE	JULY 1, 2024	JULY 1, 2025	JULY 1, 2026
1-3 Units	\$ 16.32	\$ 16.70	\$ 17.21	\$ 17.73

### MULTI-FAMILY FIXED RESIDENTIAL CHARGES

DWELLING SIZE	CURRENT RATE	JULY 1, 2024	JULY 1, 2025	JULY 1, 2026
4 or More Units	\$ 15.42	\$ 15.48	\$ 15.95	\$ 16.43

## NON-RESIDENTIAL/COMMERCIAL COLLECTION CATEGORIES

Non-residential customers are separated into five primary categories based on the concentration of organic materials and suspended solids in the wastewater they discharge. Non-residential properties are charged a fixed and a variable collection rate.

### Non-Residential/Commercial Collection Charges

CATEGORY	CURRENT RATE	JULY 1, 2024	JULY 1, 2025	JULY 1, 2026
Monthly Fixed Charge	\$ 11.84	\$ 10.59	\$ 10.91	\$ 11.24

#### Variable Charge

Low Strength*	\$ 0.41	\$ 0.77	\$ 0.80	\$ 0.83
Medium Strength*	0.54	0.77	0.80	0.83
High Strength*	0.54	0.77	0.80	0.83
Patton State Hospital*	0.66	0.44	0.46	0.48
Schools and Churches*	0.41	0.45	0.47	0.49

\*Charged per billing unit. Billing Unit = 1 Hundred Cubit Feet (HCF). 1 HCF is 748 gallons

#### Low Strength

Includes retail shops, office buildings, and other services.

#### Medium Strength

Includes laundromats, auto repair/service stations and convalescent homes.

#### High Strength

Includes restaurants, hotels, and supermarkets.

#### Patton State Hospital

Wastewater return factor based on metered flows.

#### Schools and Churches

Wastewater return factors based on higher than average outdoor water usage.

## PROPOSED TREATMENT CHARGES

Wastewater treatment fees fund operations and maintenance of the wastewater treatment facility. These fees apply to customers that are connected to the District's wastewater system. Proposed rates would take effect on July 1, 2024.

### SINGLE-FAMILY FIXED RESIDENTIAL CHARGES

DWELLING SIZE	CURRENT RATE	JULY 1, 2024	JULY 1, 2025	JULY 1, 2026
1-3 Units	\$ 26.77	\$ 29.79	\$ 32.77	\$ 36.05

### MULTI-FAMILY FIXED RESIDENTIAL CHARGES

DWELLING SIZE	CURRENT RATE	JULY 1, 2024	JULY 1, 2025	JULY 1, 2026
4 or More Units	\$ 23.90	\$ 25.67	\$ 28.24	\$ 31.07

## NON-RESIDENTIAL/COMMERCIAL TREATMENT CATEGORIES

Non-residential properties are charged a fixed and a variable treatment rate.

### Non-Residential/Commercial Treatment Charges

CATEGORY	CURRENT RATE	JULY 1, 2024	JULY 1, 2025	JULY 1, 2026
Monthly Fixed Charge	\$ 12.41	\$ 9.16	\$ 10.08	\$ 11.09

#### Variable Charge

Low Strength*	\$ 1.11	\$ 2.19	\$ 2.41	\$ 2.66
Medium Strength*	1.76	2.54	2.80	3.08
High Strength*	3.92	3.96	4.36	4.80
Patton State Hospital*	2.06	1.46	1.61	1.78
Schools and Churches*	1.11	1.29	1.42	1.57

\*Charged per billing unit. Billing Unit = 1 Hundred Cubit Feet (HCF). 1 HCF is 748 gallons

## Average Monthly Residential Utility Bill

