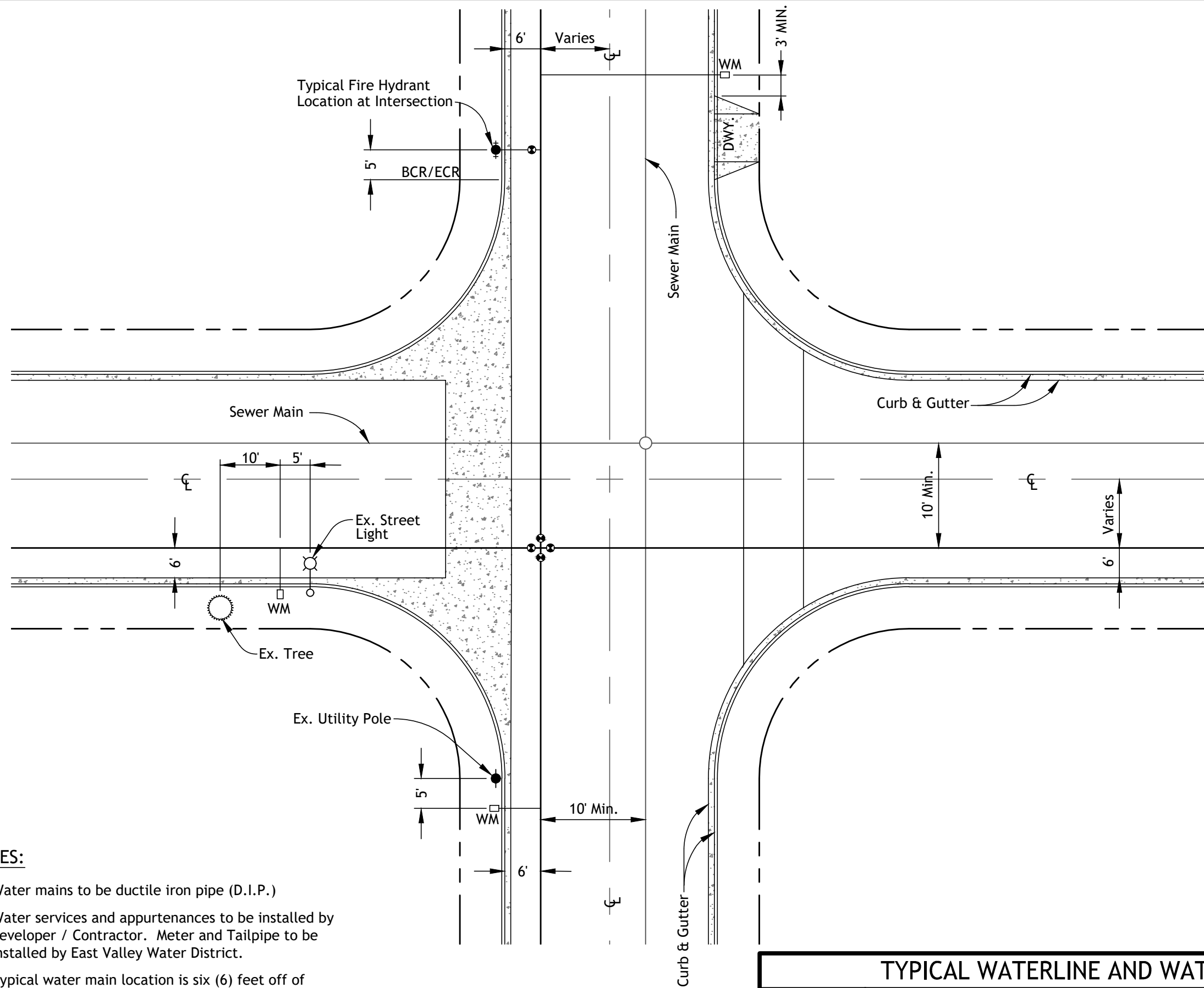




REV: 3/29/2022 J.WOLF
 M: \ENGINEERING - SECURED\STANDARDS\DWG\2022 UPDATE\WATER\W-115 TYPICAL WATERLINE AND WATER METER LAYOUT_2022.DWG



NOTES:

1. Water mains to be ductile iron pipe (D.I.P.)
2. Water services and appurtenances to be installed by Developer / Contractor. Meter and Tailpipe to be installed by East Valley Water District.
3. Typical water main location is six (6) feet off of curb face.

TYPICAL WATERLINE AND WATER METER LAYOUT		
	EAST VALLEY WATER DISTRICT, ENGINEERING DEPARTMENT APPROVED BY:  JEFF NOELTE, P.E. 67924 DIRECTOR OF ENGINEERING & OPERATIONS	
	APRIL 2022 REVISION	EVWD STD. DWG. W-115 SHEET 1 OF 1